

# COMETER - THERMOMETERS

## -200 TO +500°C FOR RTD SENSORS

## Pt1000 AND Ni1000 FOR MEASUREMENT AND RECORD



- **dual line LCD display with special symbols**
- **adjustable dual level alarm with audio indication for each channel**
- **memory of minimum and maximum temperatures**
- **function Hold - manual storing of actual temperature for later displaying**

### AVAILABLE MODELS

without record		with record	
<b>C0111</b>	single channel	<b>D0211</b>	single channel
<b>C0121</b>	dual channel	<b>D0221</b>	dual channel
<b>C0141</b>	four channel	<b>D0241</b>	four channel

### TECHNICAL PARAMETRES - common:

Operating temperature range:	-30 to +65°C
Temperature probe connector:	Cinch
Power:	battery 9V
Battery life:	typically 6 months
Dimensions without probes:	141 x 71 x 27 mm

### TECHNICAL PARAMETERS – temperature loggers **D0211, D0221, D0241** –200 to +500°C:

Temperature inputs:	RTD Pt1000: –200 to +500°C and Ni1000-6180ppm/°C: –50 to +250°C
Accuracy of the Pt1000 input without probe:	±0.3°C from -50 to +100°C, ±0.3% from reading from +100 to +500°C, ±0.6% from reading from -200 to -50°C
Accuracy of the Ni1000 input without probe:	±0.2°C from -50 to +100°C, ±0.2% from reading from +100 to +250°C
Resolution:	0.1°C from –99.9 to +500.0°C, otherwise 1°C
Logging modes:	1. manual logging - capacity of 1000 stored temperature sets 2. automatic noncyclic logging (logging stops after filling the memory) - total capacity of 16000 values 3. automatic cyclic logging (logging continues after filling the memory) - oldest values are replaced by newest) - total capacity approximately 15200 values (14400 values for D0211)
Real time clock:	year, leap year, month, day, hour, minute, second
PC interface:	serial RS232
Logging interval:	18 adjustable values from 10 s to 24 hours

### TECHNICAL PARAMETERS – thermometers without record **C0111, C0121, C0141** –50 to +250°C:

Temperature input:	RTD Ni1000-6180ppm/°C: –50 to +250°C, resolution 0.1°C
Accuracy of the Ni1000 input without probe:	±0.2°C from -50 to +100°C, ±0.2% from reading from +100 to +250°C
Temperature measurement accuracy: (including Ni1000 probes):	±0.4°C from -50 to +100°C, ±0.5% from reading from +100 to +250°C

### No temperature probes are included.

**Included accessories:** Traceable calibration certificate from the manufacturer with declared metrological traceability of etalons is based on requirements of EN ISO/IEC 17025 standard.

- In price of D0211, D0221, D0241 thermometers included are also plastic transport case, 9V battery, communication cable for PC. Free Windows program is ready to download at [www.cometsystem.cz](http://www.cometsystem.cz). Program enables to control all logger functions and viewing and printing of data in numerical and simple graphic formats. It is possible to export data to dbf or txt formats.
- In price of C0111, C0121, C0141 thermometers included are plastic case and 9V battery.

### Optional accessories:

- MP006 - RS232/USB converter for communication with the PC via USB port
- SW100 - CD with free PC program
- probes for D02x1 loggers with RTD sensor Pt1000/3850ppm with connector Cinch - probe marking followed by letter /C
- A1515 - adapter 230V-50Hz/12Vdc, 9V battery should be replaced with NiMH accumulator 9V.
- A3400 - NiMH accumulator 9V
- SWR004 - Optional software for Windows - color printing, vertical and horizontal zooming of graphs and other functions
- DBL Logger Program - database program for work with data from Comet loggers - see also page 23.

# OPTIONAL PROGRAMS FOR DATA LOGGERS

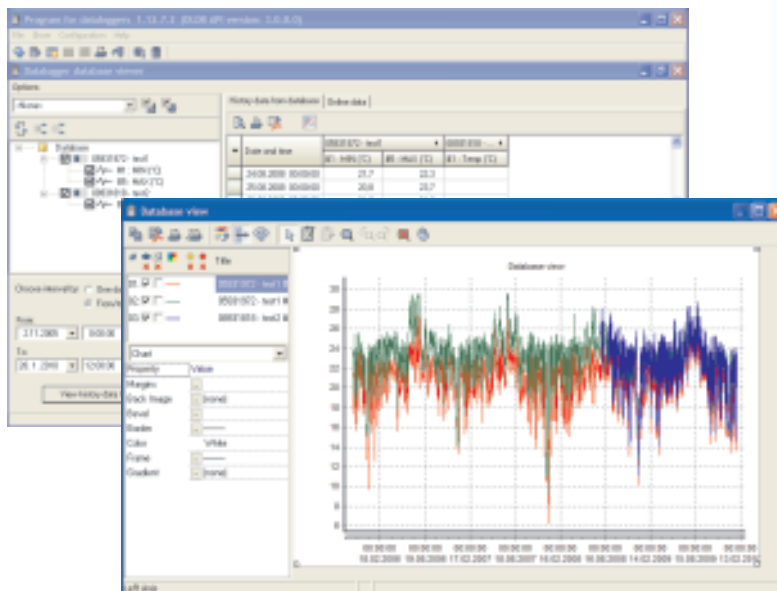
## DBL Logger Program

Database program DBL Logger Program for work with data from Comet loggers

Program enables i.a.:

- \* To set locally the GSM modem via RS232 link by means of the QMS2901 cable.
- \* To view selected channels from any Comet logger together with selected channels of other Comet loggers.
- \* Measurement from different Comet devices is possible to combine in one table or graph.
- \* To choose any time interval for analysis.
- \* Print, export to PDF - table and graph.

Other freeware needed for system operation:  
- database server Microsoft SQL or MySQL



## SWR004 Program for Data Loggers Sxxxx, Rxxxx, Gxxxx, Dxxxx.

Program is designed for communication with data loggers, read out the configuration of the device and setting up the parameters. It also allows to read out the data from the device in order to get the measured values. For the temperature and humidity devices is possible to select one counted value (dew point temperature, absolute humidity, specific humidity, mixing ratio, specific enthalpy). Data can be viewed and printed as table or graph. It is also possible to export data to DBF or TXT files. You can change the axis and select any time range to view or print out the data. It is allowed to zoom the graph, modify the drawing width and the its color. It is also possible to separate the quantities from each other and print some of them or all of them separately.

The main advantages of optional software comparing to the freeware:

- \* different graphical engine (zoom, selection of the curves, axis modification)
- \* selection of the values from table to print them out
- \* communication with more LAN adapters (freeware supports only one)
- \* statistic values, counting of MKT (Mean Kinetic Temperature)
- \* online visualization of actual values
- \* communication via GSM modem (dialling) or GPRS (data)
- \* autodownload from more data loggers
- \* automatic export to DBF or TXT after data download
- \* selectable path to store data

