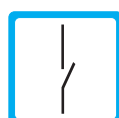
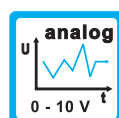
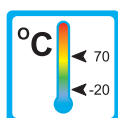


MONITOR



Range of Applications

Operation

- The position of a magnetic float / piston is detected by means of analog Hall-Sensors. The electronics provides an analog signal.

Application

- Use in combination with flow sensors (with float / piston) for various flow media (see table at right).




Features

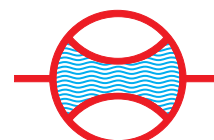
- Analog output (4-20 mA or 0-10 V)
- 1 Switch point (magnetically programmable)
- Status-LED
- Stainless steel body

Installation hints

- The operating instruction for the analog transmitter MONITOR must be observed!
- Download: www.meister-flow.com

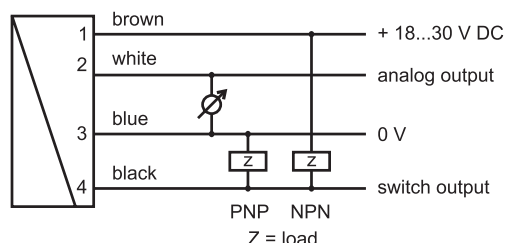
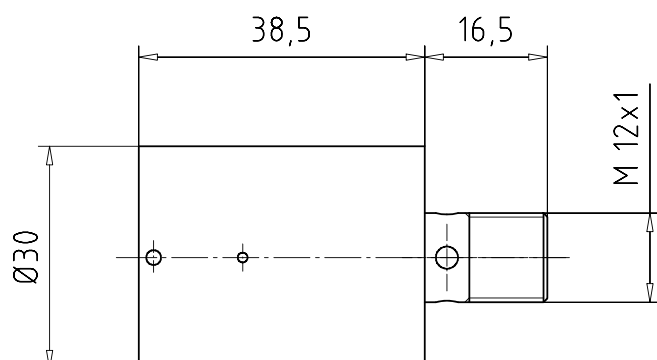
Possible Applications / Combinations

Medium	Sensor	Electronics	Combination
	DUM	+ MONITOR	= DUM/MONITOR
	DWM	+ MONITOR	= DWM/MONITOR
	RVM/U-1	+ MONITOR	= RVM/U-1/MONITOR
	RVM/U-2	+ MONITOR	= RVM/U-2/MONITOR
	RVM/U-4	+ MONITOR	= RVM/U-4/MONITOR
	DKM-1	+ MONITOR	= DKM-1/MONITOR
	DKM-2	+ MONITOR	= DKM-2/MONITOR
	DKME	+ MONITOR	= DKME/MONITOR
	DWM-L	+ MONITOR	= DWM-L/MONITOR
	RVM/U-L-1	+ MONITOR	= RVM/U-L-1/MONITOR
	RVM/U-L-2	+ MONITOR	= RVM/U-L-2/MONITOR
	RVM/U-L-4	+ MONITOR	= RVM/U-L-4/MONITOR



Technical data

Mechanical drawing and connection diagram



Technical data

Analog output	4...20 mA or 0...10 V (Please specify when ordering!)
Current output	Max. load 500 Ω
Voltage output	Max. current 10 mA
Switching output	1 short-circuit proof and reverse-polarity protected switching output Alarm: Low / Cable break: Low / OK: High Push-Pull-Output The output is self-configuring and can be connected as PNP- or NPN-switch. The switch contact is available as Min- or Max-contact (Please specify when ordering!)
Load	max. 100 mA
Hysteresis (electronic)	2 % F.S. The position of the hysteresis depends on the programming of the contact. Contact programmed as Min-switch: above / contact programmed as Max-switch: below
Hysteresis (mechanical)	Depending on the sensor
LED	Switching status LED (yellow) in the connector outlet LED on: switching output OK LED off: alarm LED flashes: teaching / programming of the switch point
Switch point programming	"Teach-in" of the switch point with a calibration magnet (see operating instruction)
Operating Voltage	24 V (18...30 V)
Power consumption	< 1 W
Connection	For round plug M 12 x 1, 4pol.
Ingress protection	IP 67
Accuracy	± 3 % f.s.d. (in combination with the flow sensor)
Repeatability	± 1 % f.s.d.
Operating temperature	-20 °C ... +70 °C
Storage temperature	-20 °C ... +80 °C
Material	Body Stainless steel 1.4305
Notes	The sensor is configured to your specifications. It is thus ready for immediate use without programming! Please note that the MONITOR-Electronics is calibrated to the flow sensor and must not be replaced! For more information, please refer to the operating instruction for the analog transmitter MONITOR. Please note also the data sheet and the operating instruction of the flow sensor!