

### SPECIAL FEATURES

- ALL SS 316 CONSTRUCTION
- DEAL FOR SLURRY / HIGH VISCOUS FLUIDS
- FLANGE & DIAPHRAGM ARE AVAILABLE IN VARIOUS TYPE
- OF SS & EXOTIC MATERIALS.

### APPLICATIONS

DIAPHRAGM SEALS ARE PROVIDED IN THE INSTRUMENTS LIKE PRESSURE GAUGES, SWITCHES, TRANSMITTERS IN ORDER TO ISOLATE THE SENSING ELEMENT FROM THE MAIN SERVICE DUE TO ITS CORROSIVE, VISCOUS AND SEDIMENTED NATURE AND TO AVOID CLOGGING AND SOLIDIFICATION. THESE KIND OF SEALS ARE WIDELY USED IN THE VISCOUS & CORROSIVE SERVICES WHERE FLUSHING IS REQUIRED PERIODICALLY & FREQUENTLY.

### SPECIFICATIONS

#### STANDARD VERSION

(COMPATIBLE WAAREE MODEL : AL (NS 100 mm & 150 mm)

Note: Pressure Gauge will be provided with internal system of NS 63 mm.

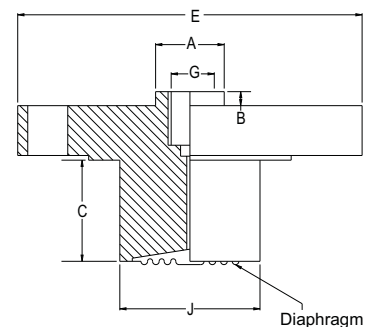
Range	: 1 kg/cm <sup>2</sup> to 250 kg/cm <sup>2</sup> *
Process Temperature	: -40°C to 200°C or as per fill fluid
Instrument Connection	: ½" BSP (F)
Process Connection	: Flange (Refer table)
Flange finish	: Finish 125-250 AARH

\* Range of selected instrument shall be suitable to flange pressure rating.

Diaphragm	: AISI 316L SS
Body	: AISI 316 SS
Flange	: AISI 316 SS
Extension	: 50 mm (other extension on request)
Fill Fluid	: Silicon Oil - DC 200



#### DIMENSIONS - STANDARD VERSION



A	B	C	E	G	J
30	8	50*	**	½" BSP(F)	***

### FLANGE TABLE WITH ORDERING CODES

#### HOW TO SELECT

e.g. FOR FLANGE SIZE OF 1" AS PER BS-10 TABLE E WITH RAISED FACE : B97 - A2

- A2 RAISED FACE  
A3 FLAT FACE

Flange Finish shall be 125 - 250 AARH as a standard. For other finish, please consult factory.

\* Or as per customer requirement

\*\* As per standard BLRF flange table ANSI, DIN, BS, JIS Etc.

\*\*\* 40 / 53 / 63 / 70 mm (suitable to range & as per flange pressure rating.)

Notes : • Drawings are not to scale. • All Dimensions are in mm.

#### AS PER ANSI B 16.5

NOMINAL SIZE	RATING /CLASS	CODE
½"	150	B09
	300	B10
	600	B11
	900	B12
	1500	B13
	2500	B14
1"	150	B21
	300	B22
	600	B23
	900	B24
	1500	B25
	2500	B26

NOMINAL SIZE	RATING /CLASS	CODE
1½"	150	B33
	300	B34
	600	B35
	900	B36
	1500	B37
	2500	B38
2"	150	B39
	300	B40
	600	B41
	900	B42
	1500	B43
	2500	B44

NOMINAL SIZE	RATING /CLASS	CODE
2½"	150	B45
	300	B46
	600	B47
	900	B48
	1500	B49
	2500	B50
3"	150	B51
	300	B52
	600	B53
	900	B54
	1500	B55
	2500	B56

**HOW TO ORDER****BASIC MODEL**

Example

**CODE****DL****OPTIONAL EXTRAS**

[It is recommended that the MOC of Diaphragm, Body &amp; Flange should be equivalent.]

**INSTRUMENT CONNECTION**

<b>VM</b> ½" NPT (F)	<b>VL</b> ½" BSP (F) (Standard)	<b>VP</b> 3/8" BSP (F)	<b>XX</b>
----------------------	---------------------------------	------------------------	-----------

**DIAPHRAGM**

<b>UJ</b> AISI 316L SS (Standard)	<b>UM</b> MONEL	<b>UL</b> HASTELLOY 'C'	<b>XX</b>
-----------------------------------	-----------------	-------------------------	-----------

**BODY**

<b>CN</b> MONEL	<b>CO</b> HASTELLOY 'C'	<b>CM</b> AISI 316L SS	<b>CL</b> AISI 316 SS (Standard)	<b>XX</b>
-----------------	-------------------------	------------------------	----------------------------------	-----------

**BODY LENGTH (Standard: 50 mm & Max. Up to 200 mm)**

SPECIFY IN mm (e.g. 50 mm, 100 mm, 150 mm &amp; 200 mm)

**100 mm****PROCESS CONNECTION**

(SELECT CODE FROM FLANGE TABLE)

**XXX****FLANGE MATERIAL**

<b>TX</b> MONEL	<b>TT</b> HASTELLOY C	<b>TL</b> AISI 316L SS	<b>TM</b> AISI 316 SS (Standard)	<b>XX</b>
-----------------	-----------------------	------------------------	----------------------------------	-----------

**FILLING FLUIDS (\* Consult factory for specifications, price and delivery.)**

<b>US</b> FLUROLUBE 4.2 [-45 to 175 °C]	<b>UY</b> SILICON DC 704 [10 to 337 °C]	<b>XX</b>
<b>UT</b> FLUROLUBE 6.3 [-40 to 235 °C]	<b>UZ</b> SILICON DC 710 [7 to 371 °C]	
<b>UU</b> FLUROLUBE FS-5 [-28 to 148 °C]	<b>VA</b> SYLTHERM 800 [-40 to 315 °C]	
<b>UV</b> FOOD GRADE OIL [-20 to 140 °C]	<b>VB</b> SYLTHERM XLT [-100 to 260 °C]	
<b>UX</b> SILICON DC 200 [-40 to 205 °C] (Standard)	<b>VC</b> HALOCARBON OIL*	

**REMOTE MOUNTING (With capillary of Max. Up to 6 Mtrs.)**

SPECIFY IN METERS (e.g. 1.5 = 1.5 METERS 2.0 = 2 METERS)

**3Mtr.****CAPILLARY**

<b>PE</b> AISI 304 SS	<b>PG</b> AISI 316 SS	<b>XX</b>
-----------------------	-----------------------	-----------

**CAPILLARY COVERED WITH ARMOUR (Applicable with PE or PG if selected)**

<b>PF</b> AISI 304 SS	<b>PH</b> AISI 316 SS	<b>PI</b> PVC (Ambient Temp. Max. 60°C)	<b>XX</b>
-----------------------	-----------------------	---	-----------

**OPTIONS**

<b>TB</b> HELIUM LEAK TEST	<b>TC</b> DRY SEAL ONLY WITHOUT INSTRUMENT	<b>GH</b> MATERIAL TEST CERTIFICATES*	<b>XX</b>
----------------------------	--	---------------------------------------	-----------

\* MATERIAL TEST CERTIFICATES WILL BE PROVIDED FOR WETTED PARTS ONLY WITH CHEMICAL COMPOSITION TESTING. FOR OTHERS, PLEASE CONSULT FACTORY.

**Ordering Example: DL - XX - XX - XX - 100 mm - XXX - XX - XX - 3mtr - XX - XX - XX**

FOR OTHER OPTIONAL ITEMS, PLEASE CONTACT FACTORY FOR DELIVERY AND MINIMUM QUANTITY OF ORDER.