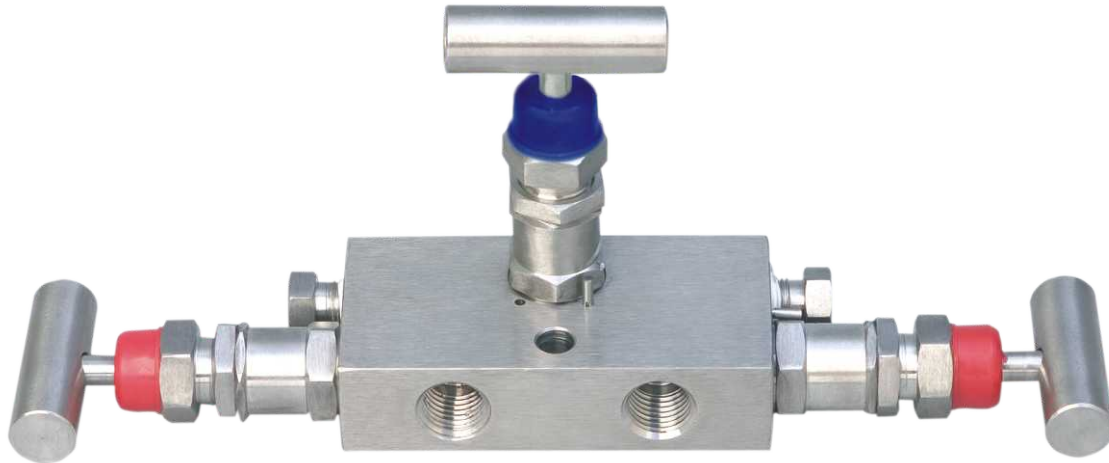


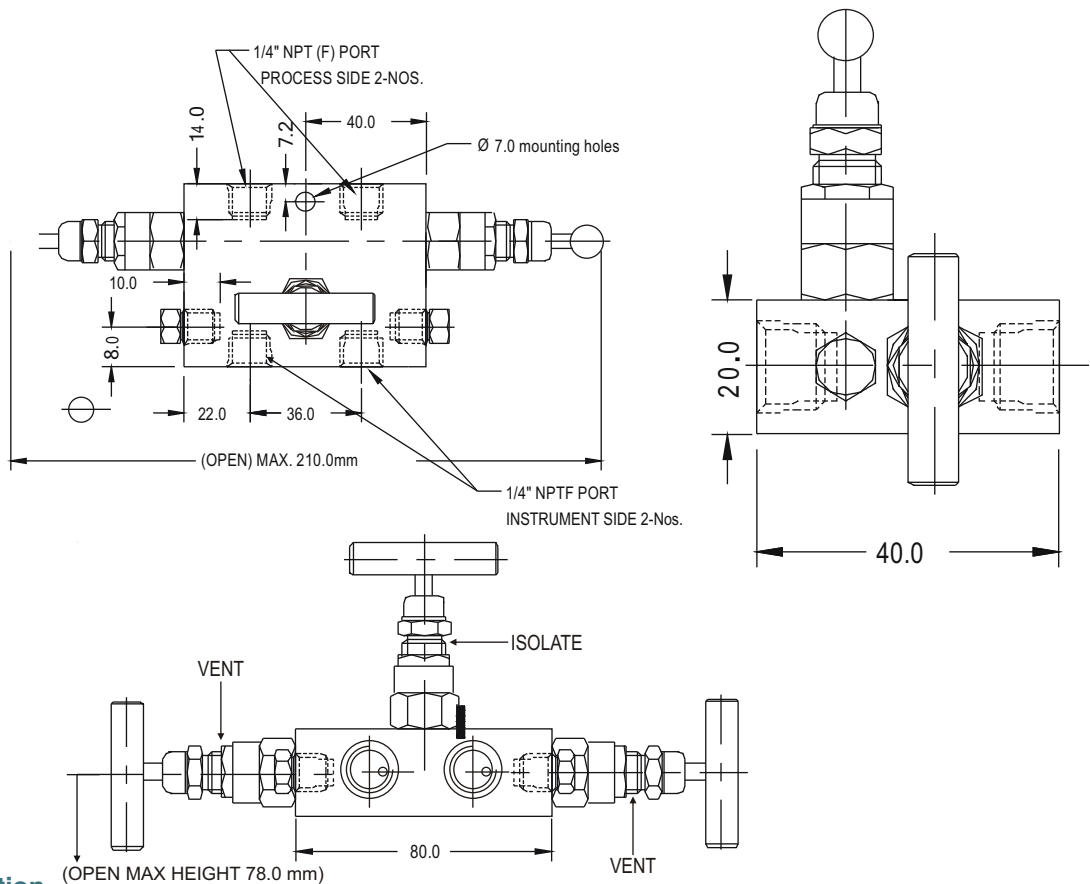
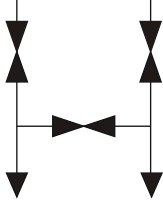
3VMN

Three valve **Miniature** manifold with compact design having threaded port for inlet and out let and finds application for isolating and venting the process media . This is used where space is a constraint. The isolating bonnets positioned on top and venting bonnets are positioned on right and left hand side.

Connection : 1/4" (F) For Instrument and process along with 1/8" (F) Drain
Maximum Working Pressure 3000 PSI



FLOW DIAGRAM



Standard connection

Product	Process side	Instrument side	Vent/Test
3VMN	1/4"NPT Female	1/4"NPT Female	1/8" NPT Female



Standard version specifications of Series 3VMN

Body	: SS 316
Stem	: SS 316
Valve assembly	: SS 316
'T' bar handle	: SS 304
Maximum working pressure	: 6000 psi [not available in Series 3VMN]
Maximum working temperature	: 240°C
Packing	: PTFE (Grafoil for temperature above 240°C to 550°C)
Type of stem	: Type CT; Stem with conical metal tip
Drain port	: 1/4" NPT [F]; provided with SS 316 plug [not available in Series 3VMN]
Hard Chrome plating	: Provided on stem tip

How to order : Valve Type - 3VMN

Body Material	Stem Type	Stem Packing	Size = Inlet x Outlet	Connections	Threads
C = Carbon Steel	CT (std)	P = PTFE (std)	24 = 1/4" x 1/4"	FF = Female x Female (Std)	N = NPT (ANSI B1.20.1)
S = SS 316 (std)	DS	G = Grafoil	44 = 1/2" x 1/2" (std)	SW = Socket Weld	P = BSPP (BS2779)
SL = SS 316L					B = BSPT (BS21)
M = Monel 400					
H = Hastelloy C					

Options

- GH : Material test certificate
- GO : Hydro test certificate
- MBC : Mounting bolts [7/16" UNF] in carbon steel
- MBS : Mounting bolts [7/16" UNF] in SS
- IE : Circular plastic.
- TF : Sour gas service to NACE standard MR-01-75.
- SG : Oxygen service. (manifolds are supplied cleaned and degreased)
- DS : Valves with stem having soft conical and delrin tip rolled into the needle for gas service.
- MB : Mounting bracket

Example

To place an order simply refer to the codes in the table.

Valve Type : **Body Material** + **Stem Type** + **Stem Packing** + **Size** + **Connections** + **Threads** + Options

3VMN + C + CT + P + 44 + FF + N = 3VS-C-CT-P-44-FF-N-Options

NOTE:

- The weld prepared types are available with female plain end - suitable for socket weld.
- Anti-tamper bonnet - special design on request with locking arrangement if desired.